

Project : _____
 Type : _____
 Drawn by : _____
 Catalogue No. : _____
 Date : _____



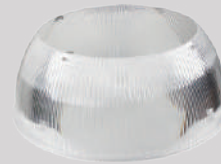
OPTIONS:



DC Sensor



Remote control



Reflector

Specifications

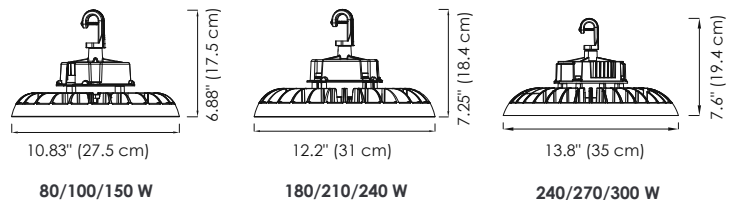
Model No.		<input type="checkbox"/> AST-HB23-150WS1BT2C1-BH35/40/50WD	<input type="checkbox"/> AST-HB23-240WS1BT2C1-BH35/40/50WD	<input type="checkbox"/> AST-HB23-300WF1BT2C1-BH35/40/50WD
General	Watts	150W/100W/80W ADJ	240W/210W/180W ADJ	300W/270W/240W ADJ
	HID Equivalent	450W	720W	1000W
	Lumen	22500L/15000L/12000L	36000L/31500L/27000L	44400L/40000L/35500L
	CCT	3500K/4000K/5000K ADJ	3500K/4000K/5000K ADJ	3500K/4000K/5000K ADJ
	Volts	AC120-347V	AC120-347V	AC120-347V
	CRI	>80	>80	>80
	Beam Angel	90 degree	90 degree	90 degree
	Hours Rated	50000hours	50000hours	50000hours
Electrical	Operating Frequency	50-60Hz	50-60Hz	50-60Hz
	Power Factor	>0.9	>0.9	>0.9
	Surge Protection	Built-in surge protection-6KV	Built-in surge protection-6KV	Built-in surge protection-6KV
	Operating Temperature	-40C(-40F) TO 50C(122F)	-40C(-40F) TO 50C(122F)	-40C(-40F) TO 50C(122F)
Physical	MOL	6.88in	7.25in	7.64in
	MOD	10.83in	12.2in	13.78in
	Lens Material	PC	PC	PC
	Housing Color	Black	Black	Black
	Weight (lbs)	5.5	7.1	9.6
Additional Information	Additional Info	CCT+Power adjustable	CCT+Power adjustable	CCT+Power adjustable
	Warranty	5 years	5 years	5 years
Compliance	Safety Listing	cULus-listed	cULus-listed	cULus-listed
	Location Rating	Wet	Wet	Wet
	Energy Star	No	No	No
	DLC Approved	Yes	Yes	Yes
	DLC ID	S-6N74WU	S-QOFK1W	S-T63FN9

Features & Specifications

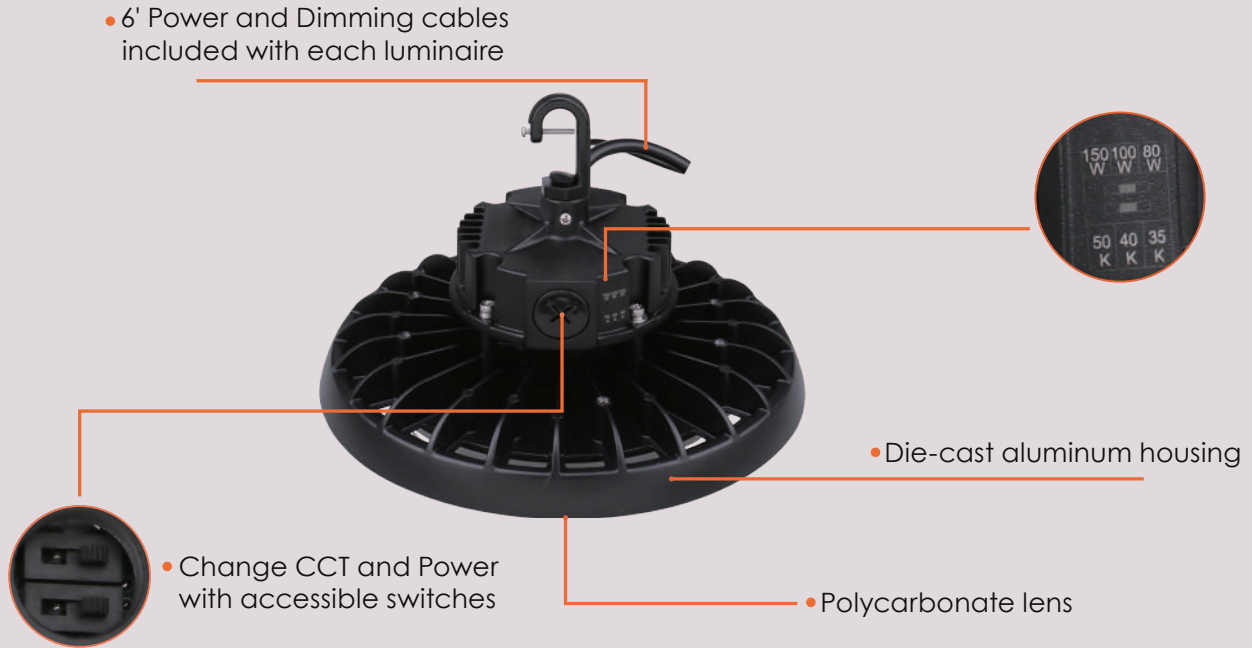
Construction	<ul style="list-style-type: none"> • Pure aluminum shell provides optimal heat dissipation. • Clear polycarbonate lens over LEDs provides a high light efficacy. Standard 90° beam angle. • CCT and Power Select switches are inside the driver housing • 6' power cable and 6' dimming cable included in all luminaires • Integrated sensor receptacle makes for easy plug-and-play installation of microwave sensor. No wiring required. Sensor are sold separately.
Mounting	<ul style="list-style-type: none"> • Hook mount.
Performance Data	<ul style="list-style-type: none"> • Available in 3500K/4000K/5000K selectable • 80+ CRI • Electrical ratings: 120-347 VAC • Estimated life of over 100 000 hours to L70 • Sosen 0-10 V dimming driver. • 6kV surge protection (standard) • Operating temperature: -40°C to 50°C (-40°F to 122°F)
Compliances	<ul style="list-style-type: none"> • cULus certified for wet locations • IP65 • Meets NSF requirements (Splash Zone and Non Food Zone) • DLC Premium

Dimensions & Weights

Model	80-150W	180-240W	240-300W
Diameter in.(cm)	10.83 (27.5)	12.2 (31)	13.8 (35)
Height in. (cm)	6.88 (17.5)	7.25 (18.4)	7.6 (19.4)
Net weight (lbs)	5.5	7.1	9.6



Product Details



Compatible Dimmers

Brand	Model
LUTON	NTSTV-DV
LEVITON	DS710-10Z / IP710
LEGRAND	RH4FBL3PW

Dimming range : 10%-100%

This table shows dimmers that have been tested and have demonstrated proper operation under normal conditions. Each installation being unique, various factors such as load, common neutrals or other electrical products on the circuit can, in certain instances, cause variance in system performance.

Read and comply to the dimmer installation instructions. Some dimmers may require more than one product for stable operation.

recommends to use dimmers designed to work with LED products. Older dimmers designed for incandescent products may cause erratic operation.

OCCUPANCY SENSORS

Part Number	Position	Volt (V)	Technology	Height (Ft)	Detection Area (%)	Time setting (Min)	Light control (Lux)	IP rating	Temperature (°C)
UFO DC Sensor	External	12V-24V DC	Mircowave	40 (max)	20%, 50%, 75%, 100%(1-8M)	10s, 1min, 5min, 10min, 15min, 20min, 30min, 60min	24H, 10LUX, 30LUX, 50LUX	IP65	-20°C~+60°C (-4°F~+140°F)

NOTE : Warm up time is 15 seconds. After that sensor connects input power first time, the light will keep on 15 seconds then go to dimming to work normally. Any other setting change by Remote Control

DEAFULT SETTING :

- Brightness : 100% ,
- Hold Time : 5 Min
- Stand-by Dim level : 30%
- Stand-by Time: 60 Min
- Sensivity : 100%
- Day Light : Off



Accessories (Order Separately)

Order Code	Compatible With
UFO Reflector 150W-240W	UHB23 150W 240W
UFO DC Sensor	UHB23 150W 240W 300W
Remote Control	UHB23 150W 240W 300W



Lumen Details

Model No.:	Watts (W)	3500K		4000K		5000K	
		Lumen Output (LM)	Efficiency (LM/W)	Lumen Output (LM)	Efficiency (LM/W)	Lumen Output (LM)	Efficiency (LM/W)
AST-HB23-150WS1BT2C1-BH35/40/50WD	80W	11360LM	142	12640LM	158	12000LM	150
	100W	14200LM	142	15800LM	158	15000LM	150
	150W	21300LM	142	23700LM	158	22500LM	150
AST-HB23-240WS1BT2C1-BH35/40/50WD	180W	25740LM	143	28800LM	160	27000LM	150
	210W	30030LM	143	33600LM	160	31500LM	150
	240W	34320LM	143	38400LM	160	36000LM	150
AST-HB23-300WF1BT2C1-BH35/40/50WD	240W	34080LM	142	37680LM	157	35500LM	148
	270W	38340LM	142	42390LM	157	40000LM	148
	300W	42600LM	142	47100LM	157	44400LM	148



Data is based upon tests performed in a controlled environment. Actual performance can vary depending on operating conditions. All products are subject to change or may be discontinued any time without notice. Please contact your Votatec customer service representative to confirm inventory levels at time of order

